

# Living Blues

Jan.2023 - Issue #282 Vol. 54,

new releases

---

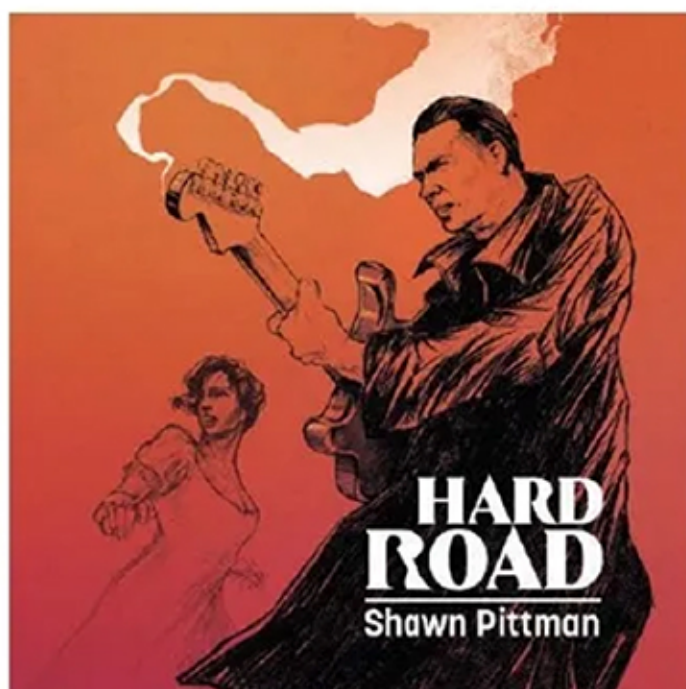
## SHAWN PITTMAN

### *Hard Road*

No label – No #

Texas-based blues musician Shawn Pittman has toured with heavyweights such as Susan Tedeschi, Anson Funderburgh, and Mike Morgan. He twice opened for B.B. King and has recorded with Double Trouble. Pittman's latest, ***Hard Road***, was recorded in Austin with his current road band. Together with Mike King on drums and Jason Crisp on bass and second guitar, Pittman lays down a set of no-nonsense blues rock with a healthy dose of Texas swagger. All tracks were recorded live in the studio with no overdubs.

Opening track *Pocket Dial* is a cheating-and-lying song for the smartphone age, complete with knowing references to touch



screens and call histories. The high-powered arrangement fueled by Pittman's fat chords and piercing leads will make Stevie Ray Vaughan fans feel right at home. The spirited shuffle *The House Always Wins* owes a debt to another Texas icon—the Fabulous Thunderbirds. Pittman's lean, tasteful guitar work is reminiscent of Jimmie Vaughan, and King and Crisp are unflappable as they hold down the rhythm. Thick, overdriven guitar tones and an infectious boogie beat channel the spirit of Billy Gibbons on *Backslidin' Again*. Pittman's gritty vocals are a perfect match for the bare-knuckles arrangement.

While clearly influenced by the Lone Star State's blues rock greats, Pittman isn't afraid to innovate. Some of the best tracks on ***Hard Road*** feature Crisp on guitar rather than bass. The dual guitars and drums create a raw, visceral sound that's bound to get listeners' adrenaline pumping. The lyrics of *Sativa* will delight 420 enthusiasts, but it's the droning mix of rock and Hill Country blues that make the track stand out. Deftly performed stop-time riffs and the raucous crunch of two overdriven guitars make *Maintain* a delight. Pittman contributes some of his finest fretwork while Crisp and King sound like Texas' answer to Hound Dog Taylor's *HouseRockers*.

With Shawn Pittman, what you see is what you get. ***Hard Road*** satisfies the craving for meat-and-potatoes, guitar-driven blues and will leave listeners eager to hear more of Pittman's music.

—Jon Kleinman